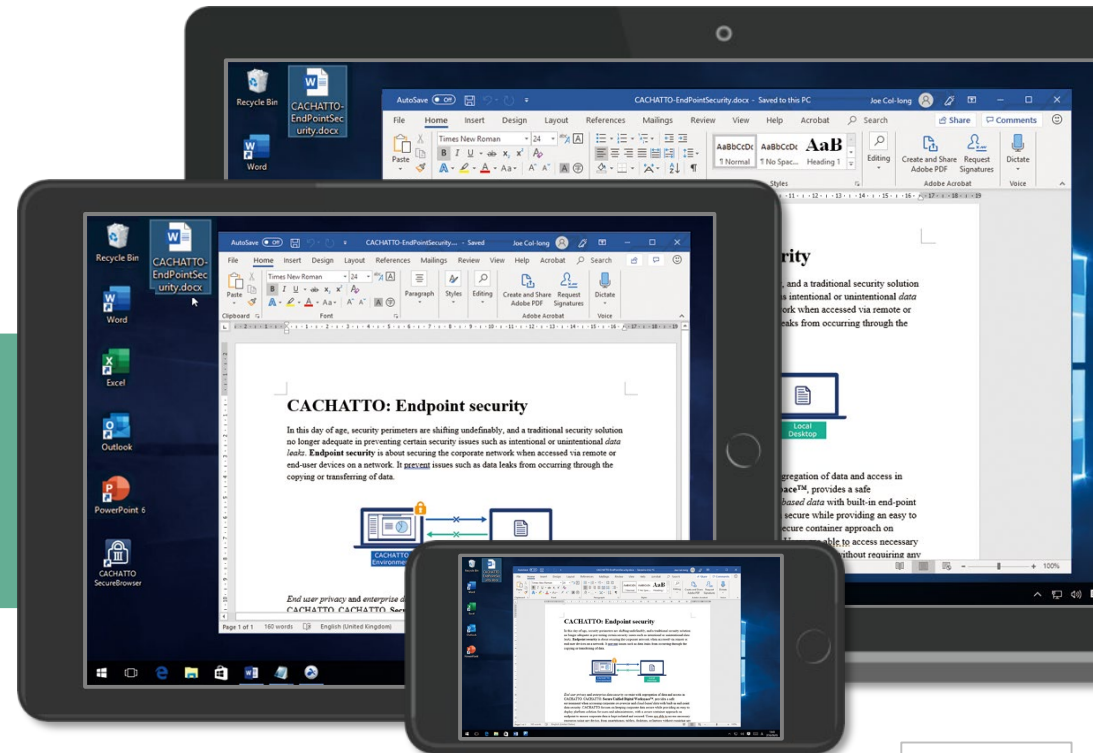


Optional product

Secure remote desktop

splashtop® for **CACHATTO**®

Product Overview



First Edition, May of 2019

What is Splashtop for CACHATTO?

Remote desktop + security

Splashtop for CACHATTO is a remote desktop solution that linked with CACHATTO's excellent authentication and labour management function. It also has unique features enhancing security and management.

Access terminals

In-house PC



Support for multiple devices

Unmatched performance

Easy introduction

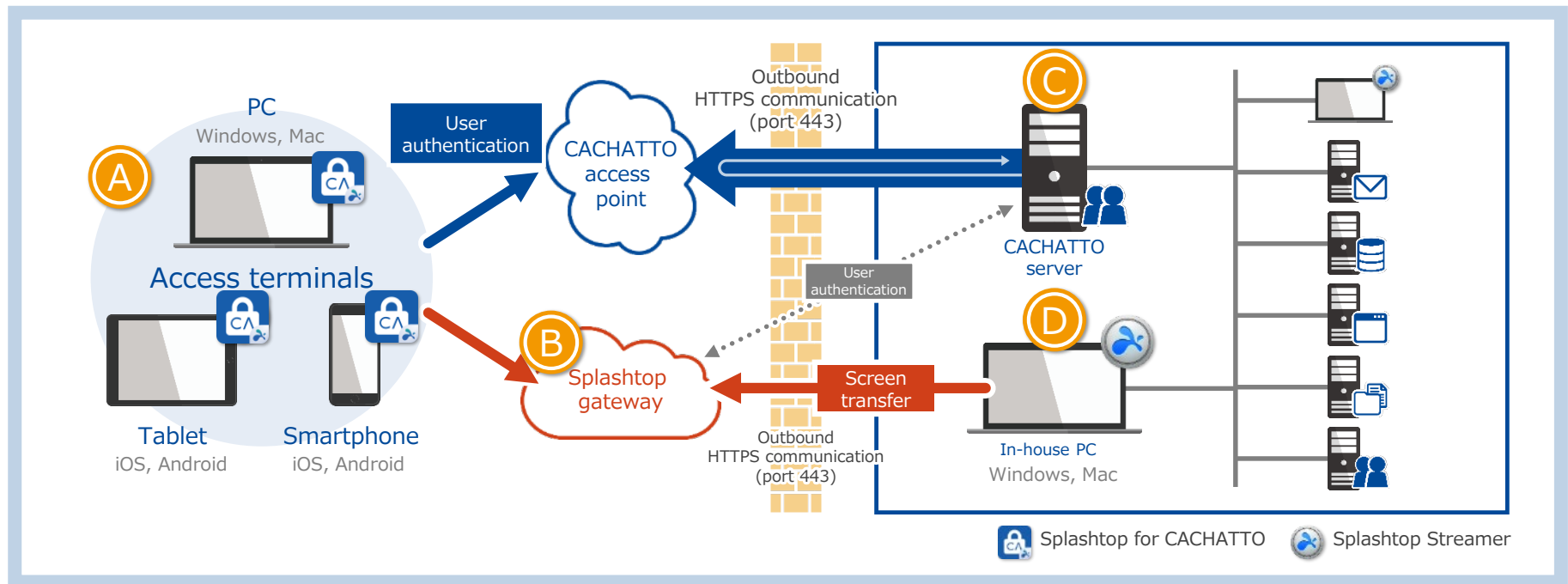
Link with CACHATTO
(Secure authentication, user management)

Support for Wake-on-Lan

What is Splashtop for CACHATTO?

System architecture

Splashtop for CACHATTO consists of the 'access terminals', such as a PC, tablet, and/or smartphone, the 'Splashtop gateway' operated on a cloud, the CACHATTO server installed within the company, and the in-house PC.



- A** PCs, tablets, and smartphones where the app for access is installed
- C** CACHATTO server where user authentication and user management are performed

- B** Gateway server for relay operated on a cloud
- D** PC on individual's company desk (in-house PC) where apps for screen streaming/remote control are installed

*The version of CACHATTO server must be V5.5 R7 or later.

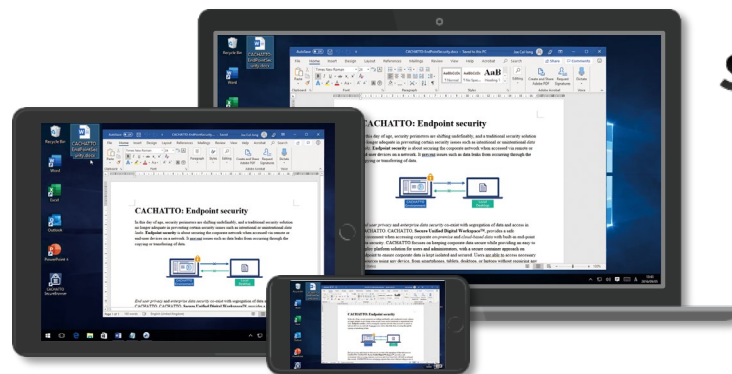
*The CACHATTO server accesses the Splashtop gateway on a cloud as needed; therefore, a proxy and firewall need to be given permission to connect to the Splashtop gateway.

Splashtop for CACHATTO features

Supports multiple devices

The product allows you to access the PC on your office desk not only from a remote PC but from smart devices as well, such as a tablet and smartphone. Whether Windows or Mac, the PC on the individual's desk can be accessed.

Access terminals



Tablet
iOS, Android

Smartphone
iOS, Android

PC
Windows, Mac



In-house PC



PC
Windows, Mac

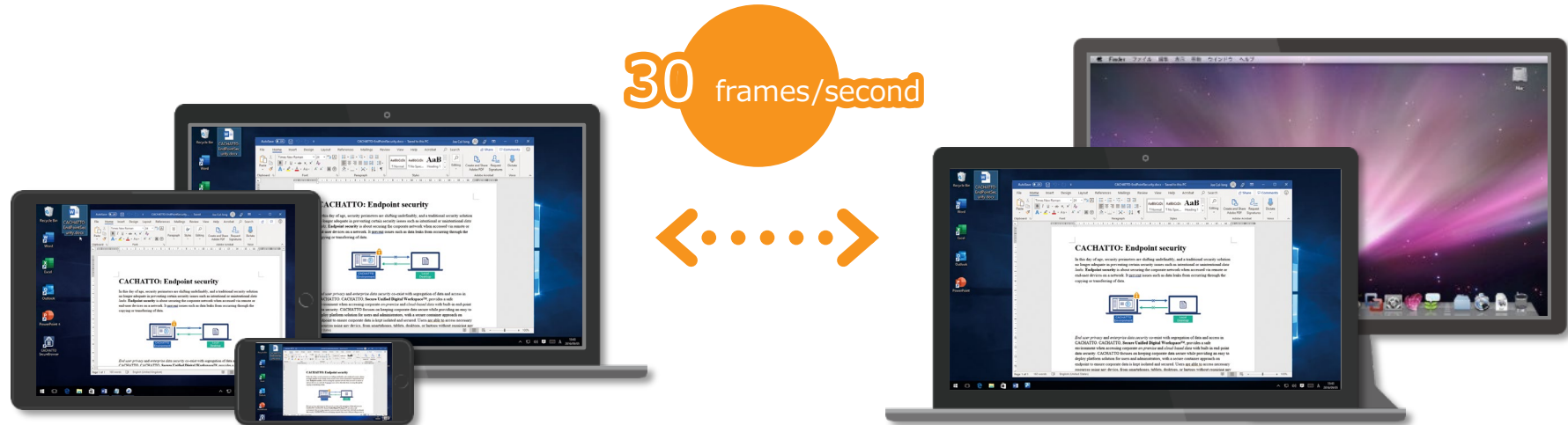
Splashtop for CACHATTO features

Unmatched performance at an average of 30 frames/second

The supported average frame rate is 30 fps, enabling users to perform stress-free, efficient user experience.

Access terminals

In-house PC



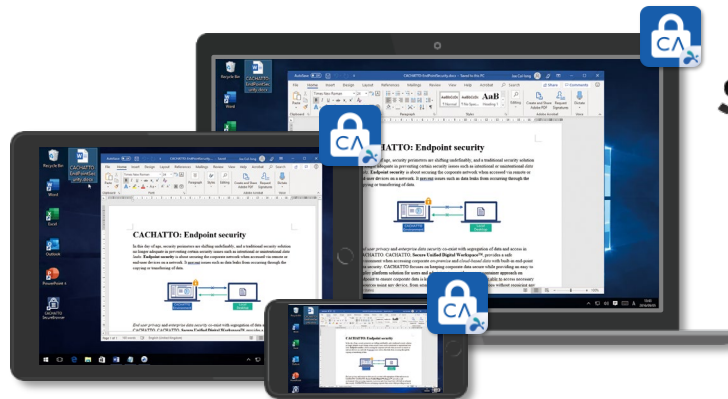
*The Internet access line capacity may need to be enhanced.

Splashtop for CACHATTO features

Easy introduction by just installing the app

Splashtop for CACHATTO can be used just by installing the dedicated app on the access terminals and the streamer app on the in-house PC. There is no need for the introduction of VPN or changes to the firewall settings.

Access terminals



In-house PC



Splashtop for CACHATTO

As well as Login App/CACHATTO SecureBrowser



Splashtop Streamer

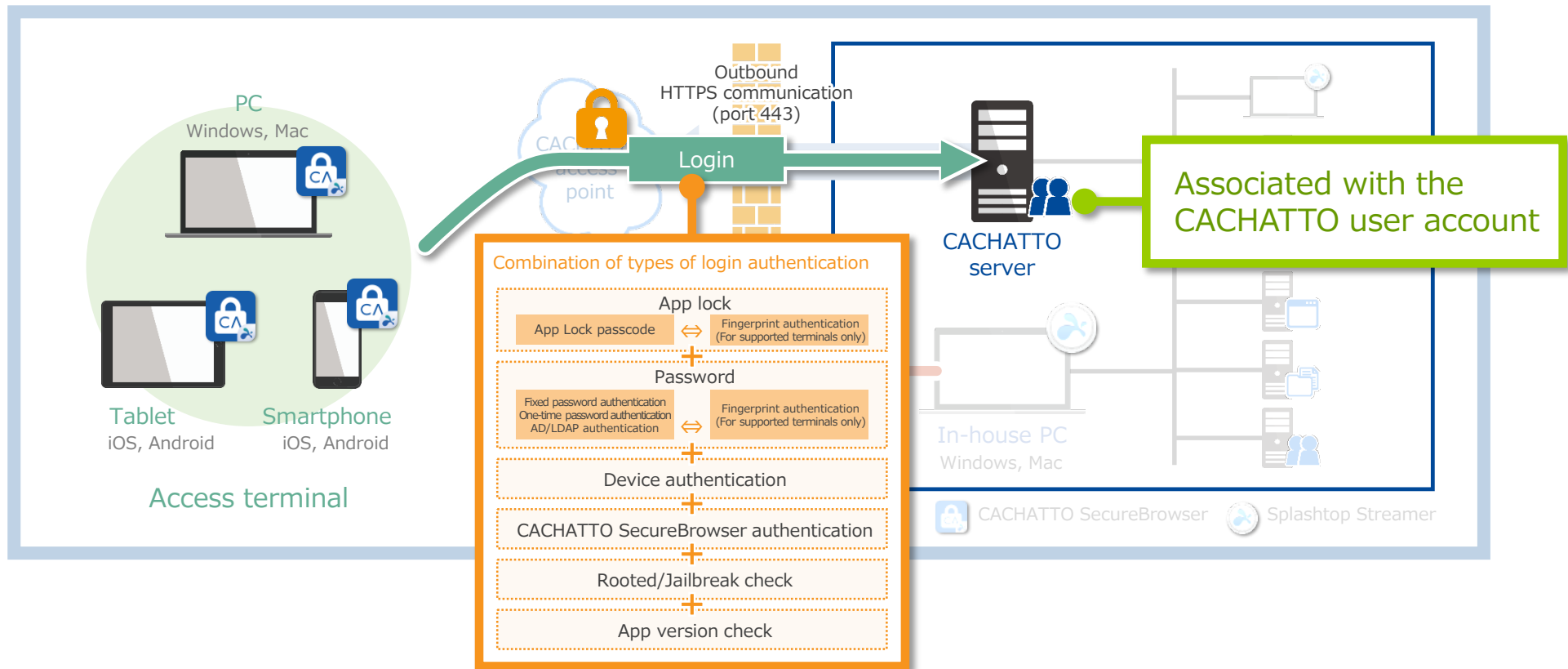
*The version of Login App (For Windows) or CACHATTO SecureBrowser (for iOS/Android/Mac) that supports Splashtop needs to be installed.

Splashtop for CACHATTO features

Splashtop for CACHATTO
Specific functions

Secure user authentication

Authentication functions such as 'device authentication', 'fingerprint authentication', 'AD/LDAP authentication', and 'One-Time Password authentication', are all available by using the authentication function of CACHATTO.



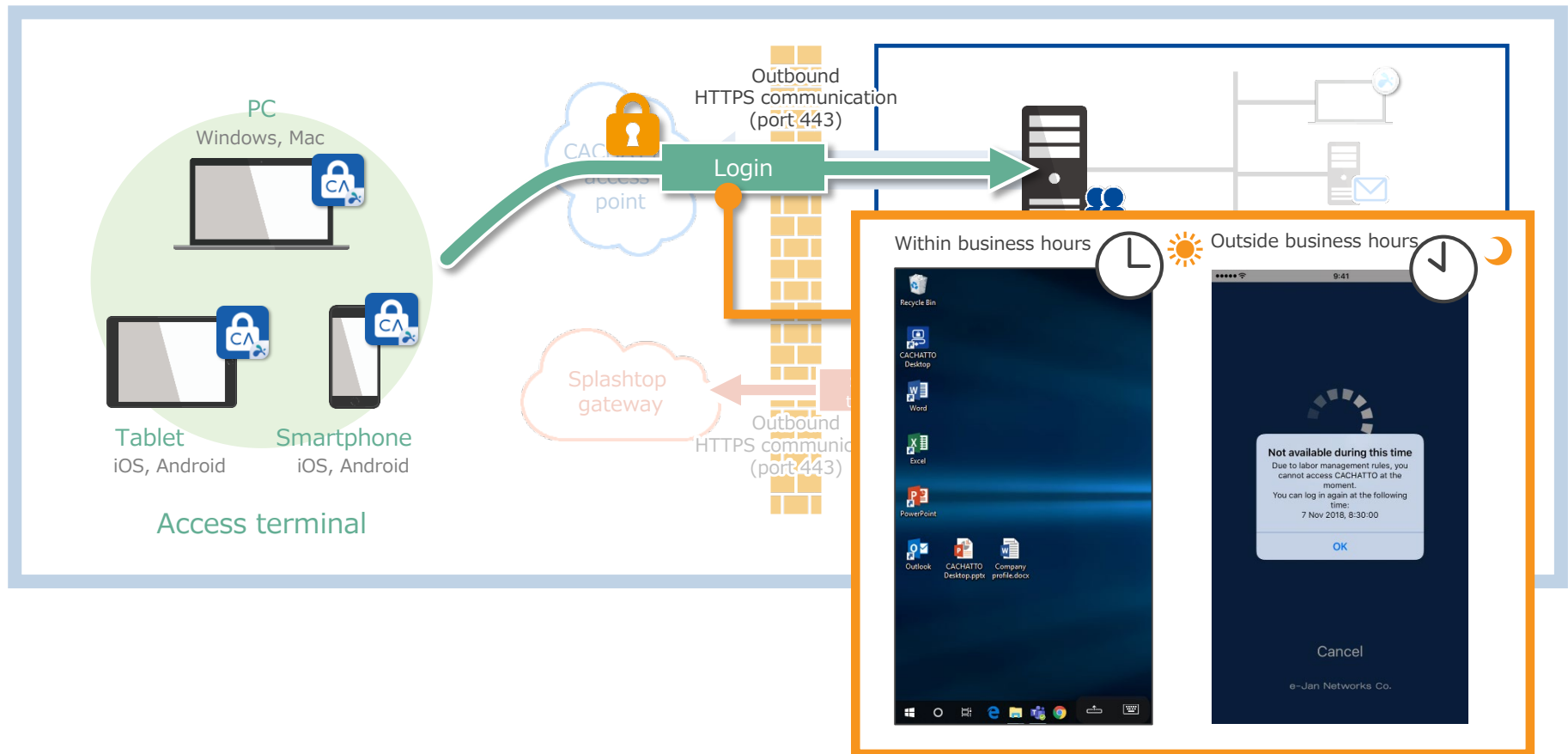
*The version of the CACHATTO server must be V5.5 R7 or later.

Splashtop for CACHATTO features

Splashtop for CACHATTO
Specific functions

Support for labour management using time control function

The time range or days allowed for users to use their devices can be set for each user by linking with the *'usage time control function'* of CACHATTO.



*The version of the CACHATTO server must be V5.5 R7 or later.

Splashtop for CACHATTO features

Splashtop for CACHATTO
Specific functions

Enhanced security with the screenshot prevention function

The 'screenshot prevention function' unique to this product can prevent/control the screenshot acquisition operation on the access terminals.

Access terminals

In-house PC



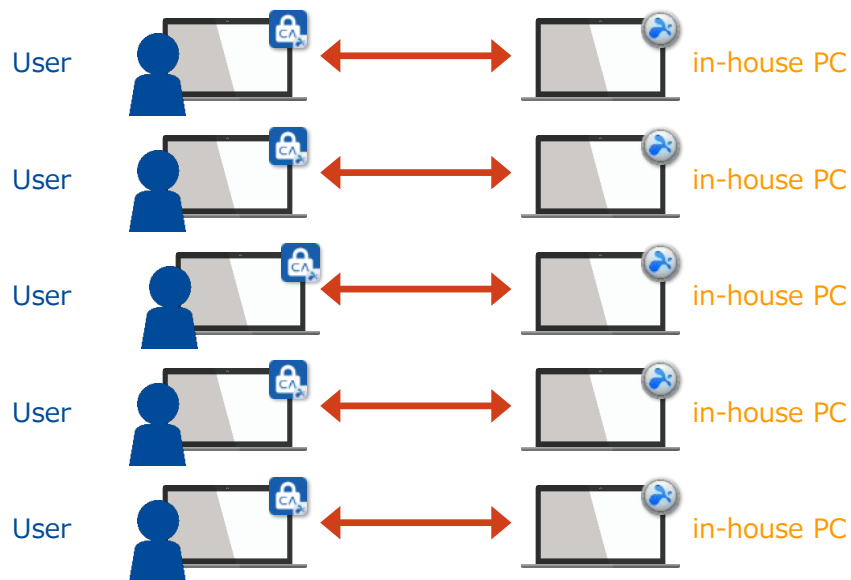
*Under the iOS, after detecting a screenshot acquisition operation, this function forcibly terminates Splashtop for CACHATTO and CACHATTO SecureBrowser and then locks the account to mitigate information leakage. *The screenshot prevention function is unavailable for Mac.

Splashtop for CACHATTO features

Cost reduction by sharing in-house PC connectivity

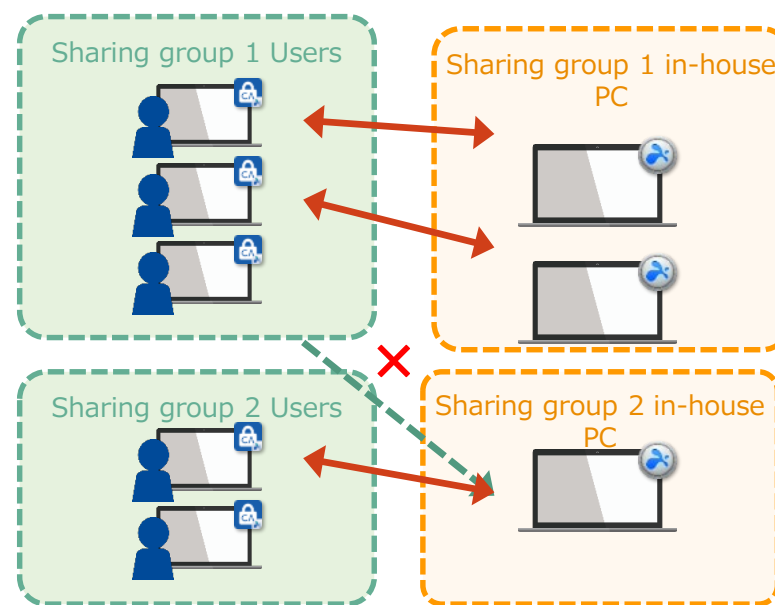
The 'Connected terminals sharing function' groups the in-house PCs where Splashtop Streamer is installed, for multiple users to share. This decreases the necessary number of connected terminals, leading to operation cost reduction. (This function is a paid option)

Usual operation form



Need for same number of in-house PCs
for the number of access terminals

Operation form when an in-house PC is shared



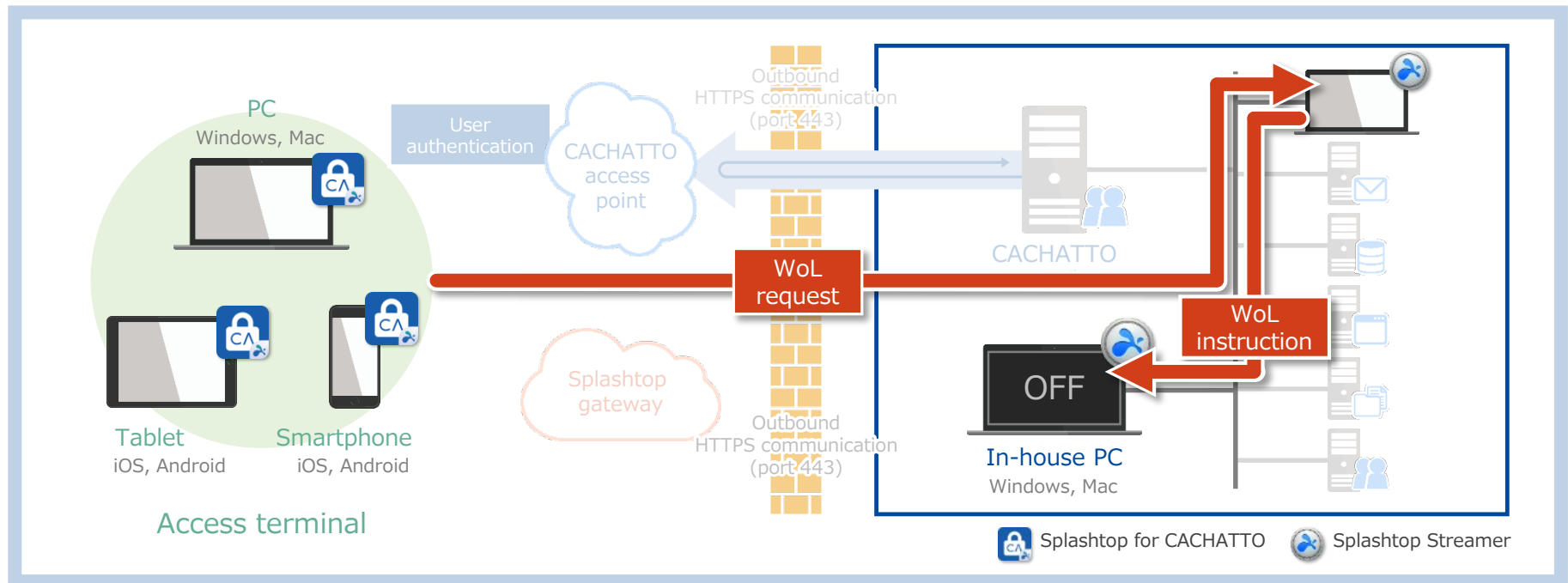
In-house PC grouped and shared

*The Connected terminals sharing function is available for CACHATTO V5.6 or later. *Using this function requires the purchase of the licence for Splashtop for CACHATTO together with the 'Basic licence of the Connected terminals sharing function.' This licence includes the user privileges of the Connected terminals sharing function and the generation of one sharing group. To generate two or more sharing groups, the necessary number of additional group licences needs to be separately purchased. *One connected terminal cannot belong to multiple sharing groups. Also, one user cannot use multiple sharing groups. *When all connected terminals are used by other users, a user attempting to gain access cannot use such terminals.

Splashtop for CACHATTO features

Support for Wake-on-Lan

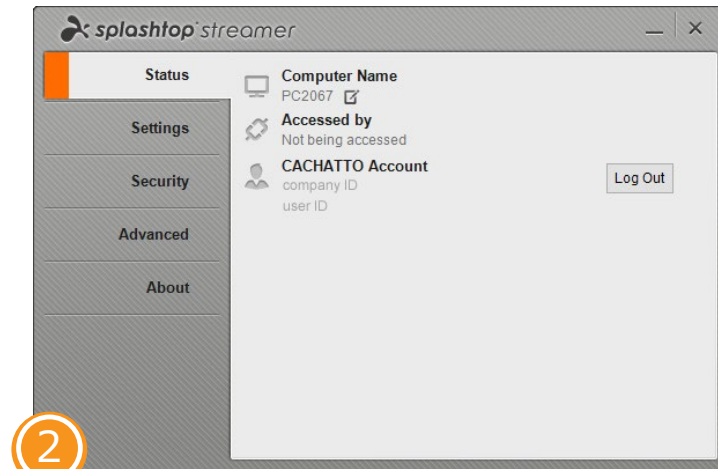
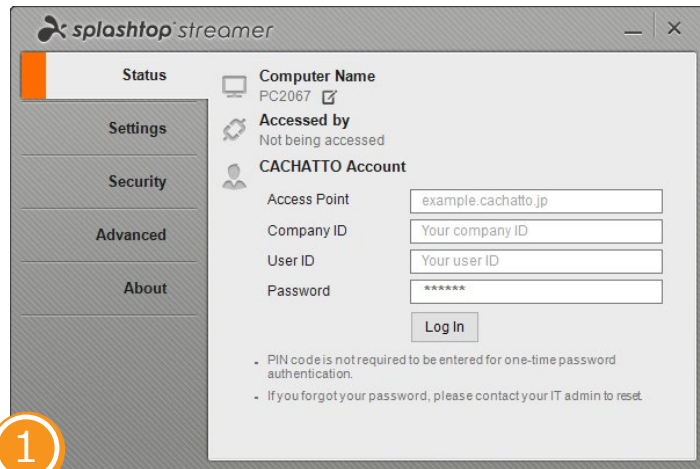
A WoL-supported on in-house PCs enable users to start and access PC. When there is Splashtop Streamer for CACHATTO in operation on the same subnet, a WoL instruction can be relayed, so there is no need for dedicated hardware to be introduced.



Sample images

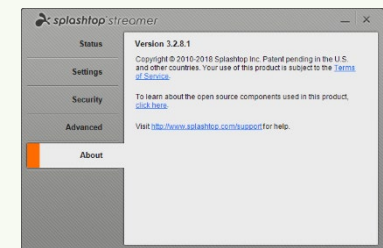
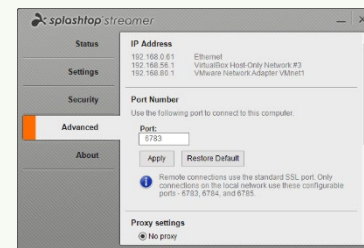
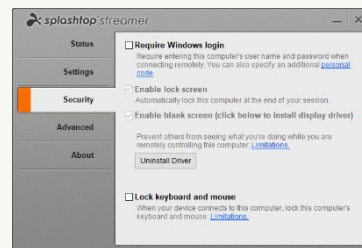
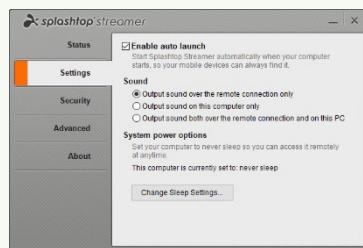
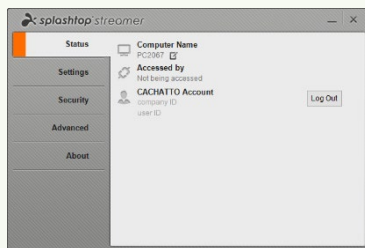
In-house PC pre-setting

Install Splashtop Streamer on in-house PC and log into it in advance with the account for CACHATTO.



Enter the account information for CACHATTO to log in.

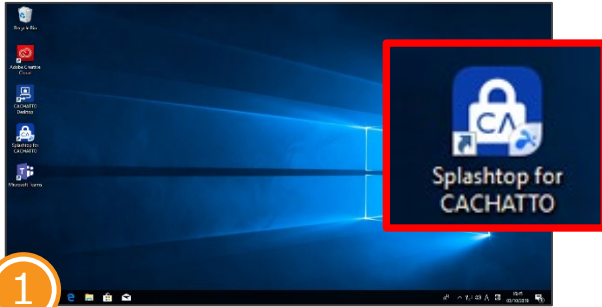
List of Splashtop Streamer setting



Sample images

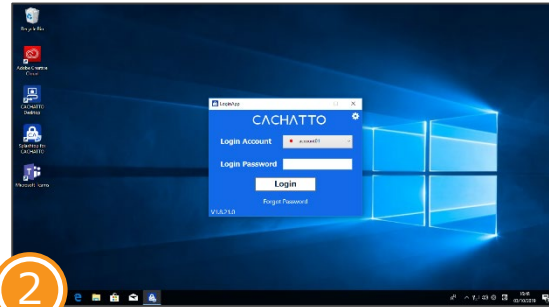
Splashtop for CACHATTO on PC

Start Splashtop for CACHATTO from the app icon to make a connection to the in-house PC.



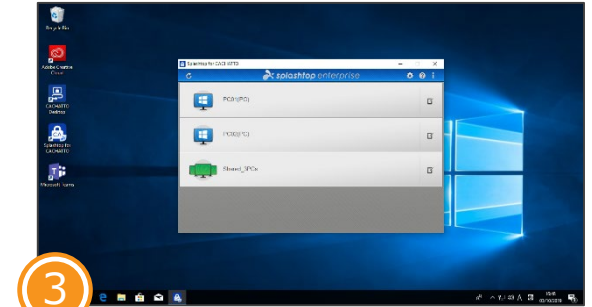
1

Start 'Splashtop for CACHATTO.'



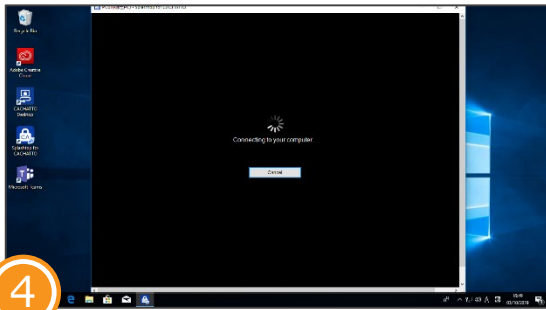
2

Login in using the Login App for user authentication



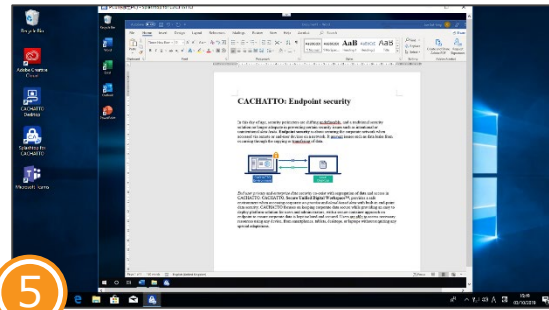
3

Select in-house PC to access.



4

Connecting to in-house PC



5

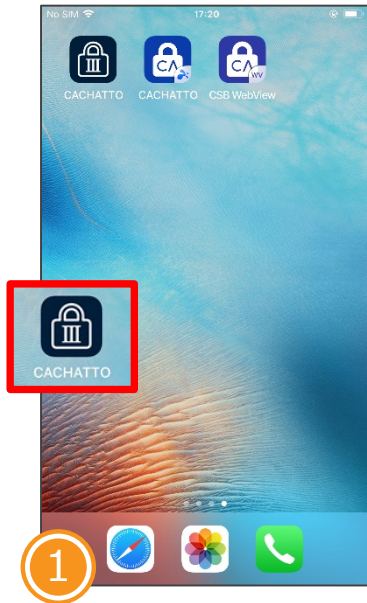
Once connected start using the app.

*When CACHATTO Desktop is in use, the app can be started from Launcher.

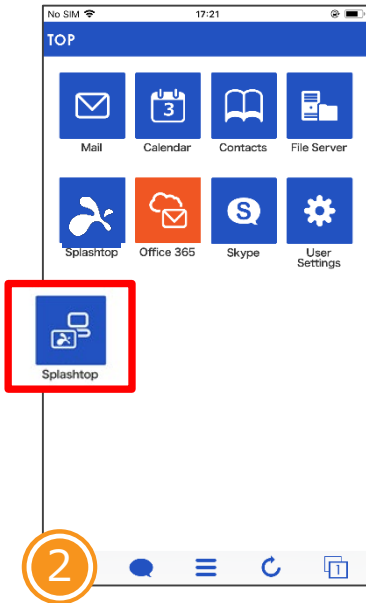
Sample images

Splashtop for CACHATTO on smart device

Start Splashtop for CACHATTO on the Top page of CACHATTO SecureBrowser and connect to in-house PC.



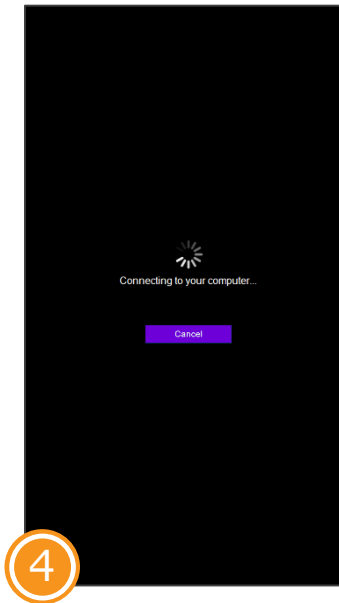
1 Log into 'CACHATTO SecureBrowser'.



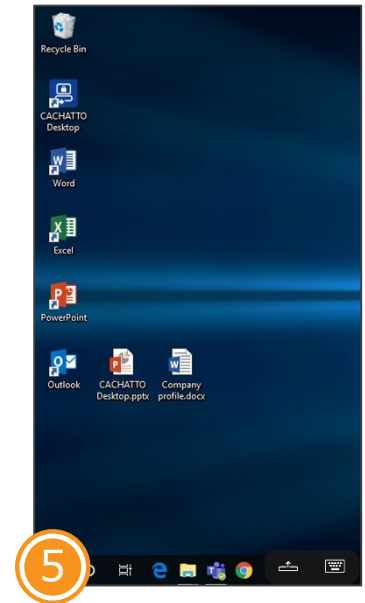
2 Select 'Splashtop' on the Top page to start App..



3 Select in-house PC to access.



4 Connecting in-house PC



5 Once connected, start using the app.

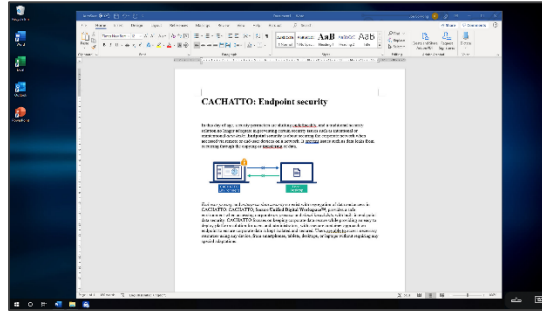
Sample images

Splashtop for CACHATTO on smart device

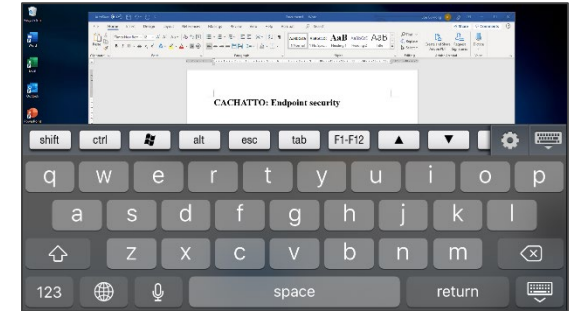
Use in horizontal orientation



When displaying the Desktop screen

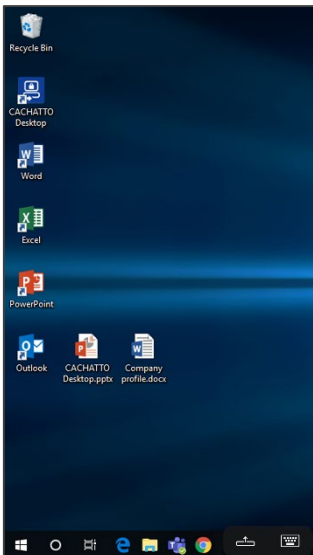


When opening a Word file

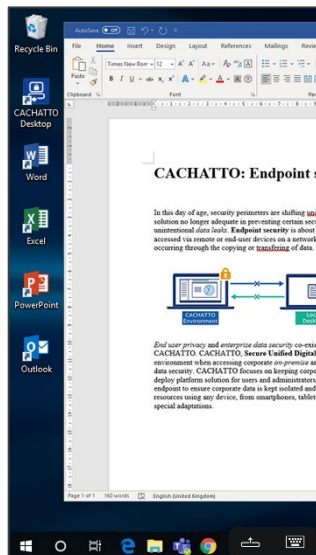


When using the keyboard

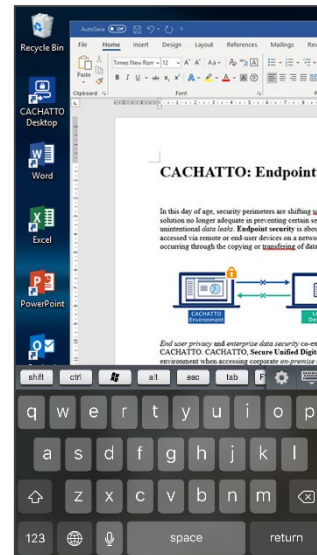
Use in vertical orientation



When displaying the Desktop screen

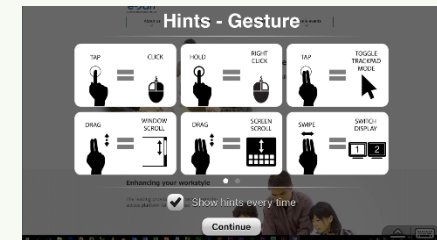


When opening a Word file



Comfortable operability is provided.

A variety of gestures provides comfortable operability even from a smart device.



Solutions comparison

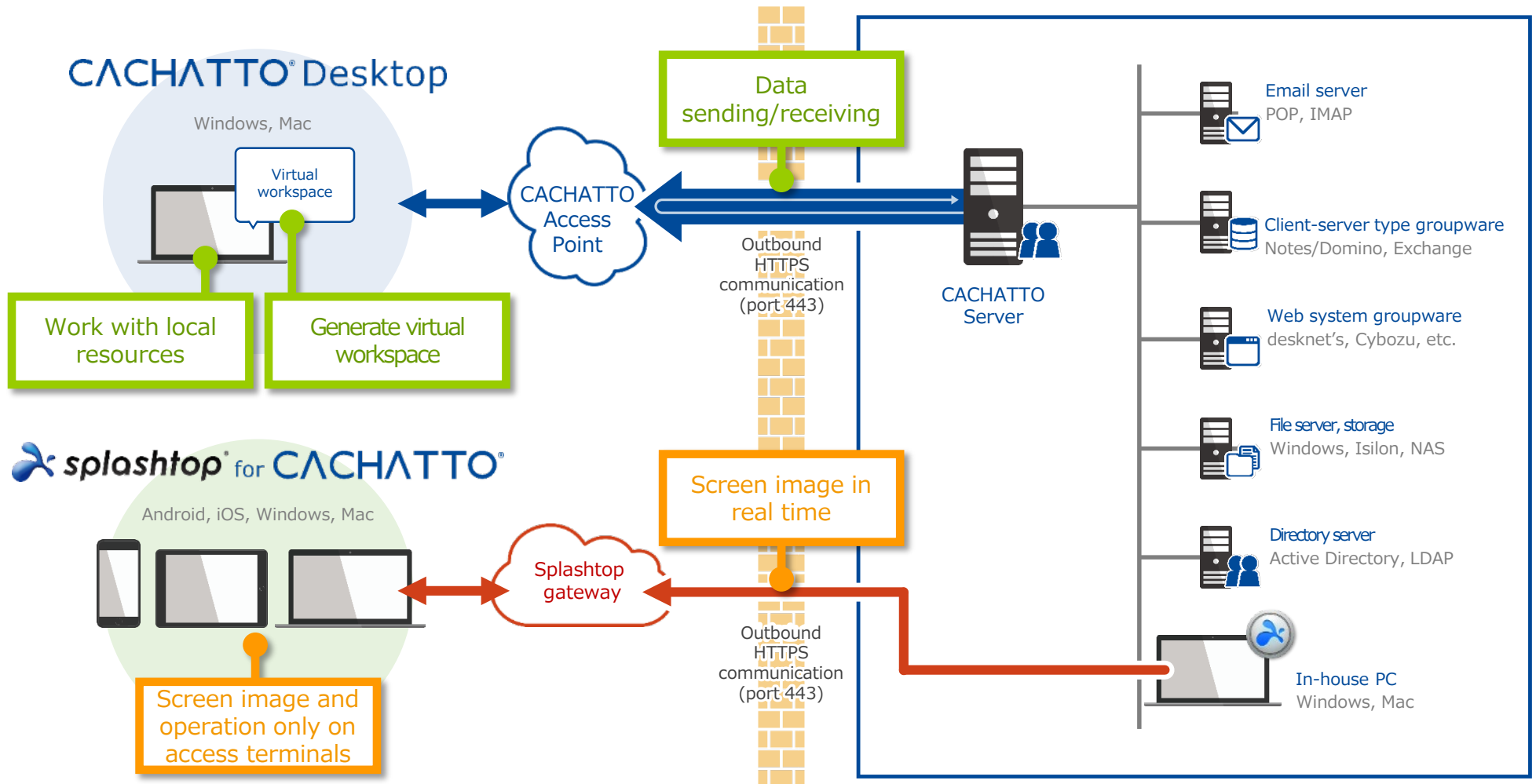
Splashtop for CACHATTO & CACHATTO Desktop (1)

CACHATTO Desktop enables you to conduct businesses in a secure virtual workspace (sandbox environment) with offline capabilities. Select the appropriate product according to the intended use case or usage scenario.

	Splashtop for CACHATTO	CACHATTO Desktop
Connection	In-house PC (Windows/Mac)	Internal corporate server (via CACHATTO)
Method	Image transfer	Sandbox environment
Network environment	Necessary (Always)	Necessary (Only for data transfer)
Offline capability	Not possible	Possible (for unstable internet connection)
Supported devices	Android, iOS, Windows, Mac	Windows, Mac
Others	<ul style="list-style-type: none">The apps that can be used on the connected in-house PC are all available.	<ul style="list-style-type: none">Comfortable operation with local resourcesLimited apps available

Solution comparison

Splashtop for CACHATTO & CACHATTO Desktop (2)



Operating environment

Access terminals (iOS/Android)



Supported terminals		Minimum operating environment	Recommended operating environment
iPhone	Terminal	iPhone 5 or later	iPhone 6s Plus or later
	Resolution	640 x 960 or higher	1024 x 768 or higher
	OS	iOS 10.0 or later	iOS 10.0 or later
iPad	Terminal	iPad2 or later	iPad Air 2 or later
	Resolution	1024 x 768 or higher	1024 x 768 or higher
	OS	iOS 10.0 or later	iOS 10.0 or later
Android smartphone	Terminal	With ARMv7 mounted	With Qualcomm/Nvidia 2 Core or higher mounted
	Resolution	480 x 800 or higher	480 x 800 or higher
	OS	Android 5.0 or later	Android 5.0 or later
Android tablet	Terminal	With ARMv7 or higher mounted	With Qualcomm/Nvidia 2 Core or higher mounted
	Resolution	480 x 800 or higher	480 x 800 or higher
	OS	Android 5.0 or later	Android 5.0 or later

*CACHATTO SecureBrowser or LoginApp that supports Splashtop for CACHATTO is required separately.

Operating environment

Access terminals (Windows/Mac)



Supported terminals		Minimum operating environment	Recommended operating environment
Windows	CPU	Intel Atom family CPU or higher	Intel Core i7 or higher
	Memory	2 GB or more	4 GB or more
	Graphics	Intel GMA	Intel GMA
	Resolution	1024 x 600 or higher	1024 x 600 or higher
	OS	Windows 7, 8.1, 10	Windows 7, 8.1, 10
Mac	CPU	1.6 GHz 2 Core or higher	Intel Core i7 or higher
	Memory	2 GB or more	4 GB or more
	OS	Mac OS X 10.10 or later	Mac OS X 10.10 or later

*CACHATTO SecureBrowser or LoginApp that supports Splashtop for CACHATTO is required separately.

Operating environment

Streamer terminals (Windows/Mac)



Supported terminals		Minimum operating environment	Recommended operating environment
Windows	CPU	1.6 GHz 2 Core or higher	Intel Core i7 or higher
	Memory	2 GB or more	4 GB or more
	Graphics	GPU or higher	NVIDIA GeForce series or higher (NVIDIA GeForce 200/300/400/500/600/700/800M/900/10, etc.)
	Resolution	1024 x 600 or higher	1024 x 600 or higher
	OS	Windows 7, 8.1, 10 Windows Server 2008, 2012, 2016	Windows 7, 8.1, 10 Windows Server 2008 R2, 2012 R2, 2016
Mac	CPU	1.6 GHz 2 Core or higher	Intel Core i7 or higher
	Memory	2 GB or more	8 GB or more
	OS	Mac OS X 10.10 or higher	Mac OS X 10.10 or higher

*Splashtop Streamer for CACHATTO needs to be installed separately.